

RECEIVED

By Nova Scotia Aquaculture Review Board at 9:01 am, Jan 22, 2024

NSARB-2023-001-AFF-001

Queens Recreational Boating Association

BROOKLYN MARINA

Ref# QRBA pp 1 - Maps



Chart showing markers used in Sailing Races

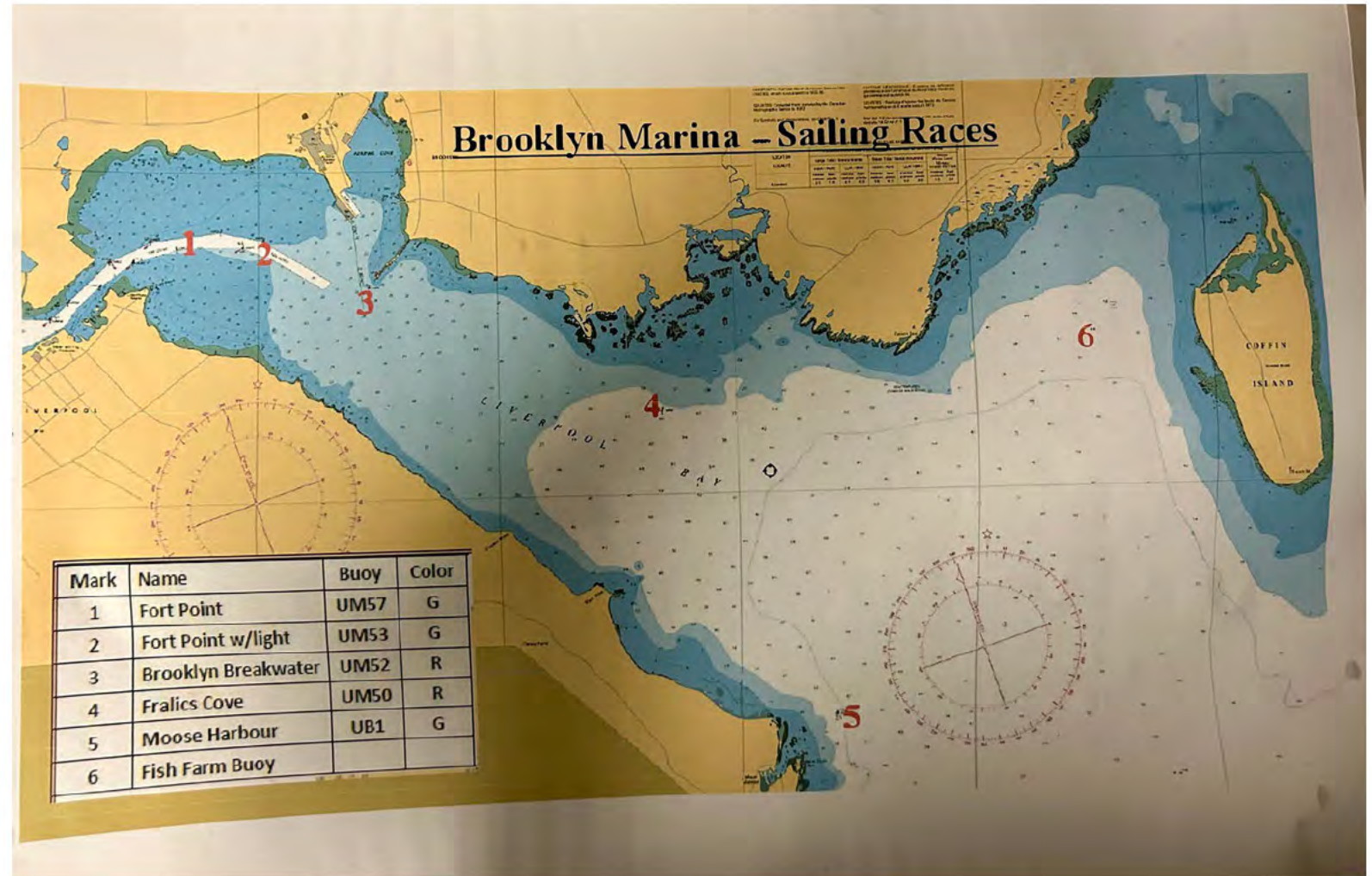


Chart showing route of annual parade of boats



Brooklyn Marina

Sep 9 · 🌐



Members September Harbour Cruise and Social

Watch for the Parade of Boats... See more



Queens Recreational Boating Association – Brooklyn Marina Photo Album

Presentation for ARB









Brooklyn Marina



Jul 3 · 🌐

Once again we will be welcoming HMCS Glace Bay Tuesday July 4th at 5. The bus will be arriving to pick them up at 7pm.... See more





7



1



1



Brooklyn Marina

Once again we will be welcoming HM... more



Send

Video has no sound



Add a comment



Posts About Videos More

Like Comment Share



Brooklyn Marina

Jul 3 · 🌐

Once again we will be welcoming HMCS Glace Bay Tuesday July 4th at 5. The bus will be arriving to pick them up at 7pm.... See more



You and 5 others 2 comments 8 shares





Brooklyn Marina



Jun 19 · 🌐

HMCS GLACE BAY has arrived at Liverpool Bay
[#brooklynmarina](#)
[#liverpoolbay](#)



61

6 comments 28 shares





7



1



1



Brooklyn Marina

Once again we will be welcoming HM... more



Send

Video has no sound



Add a comment



Posts

About

Videos

More ▾



Brooklyn Marina



Jul 5 · 🌐

Lots of wonderful sailors from the HMCS Glace Bay stopped by at the Brooklyn Marina for their bus ride back to Halifax. We are so grateful for th... See more



👍❤️ 45

5 comments 8 shares

👍 Like

💬 Comment

➦ Share



Home



Video



Friends



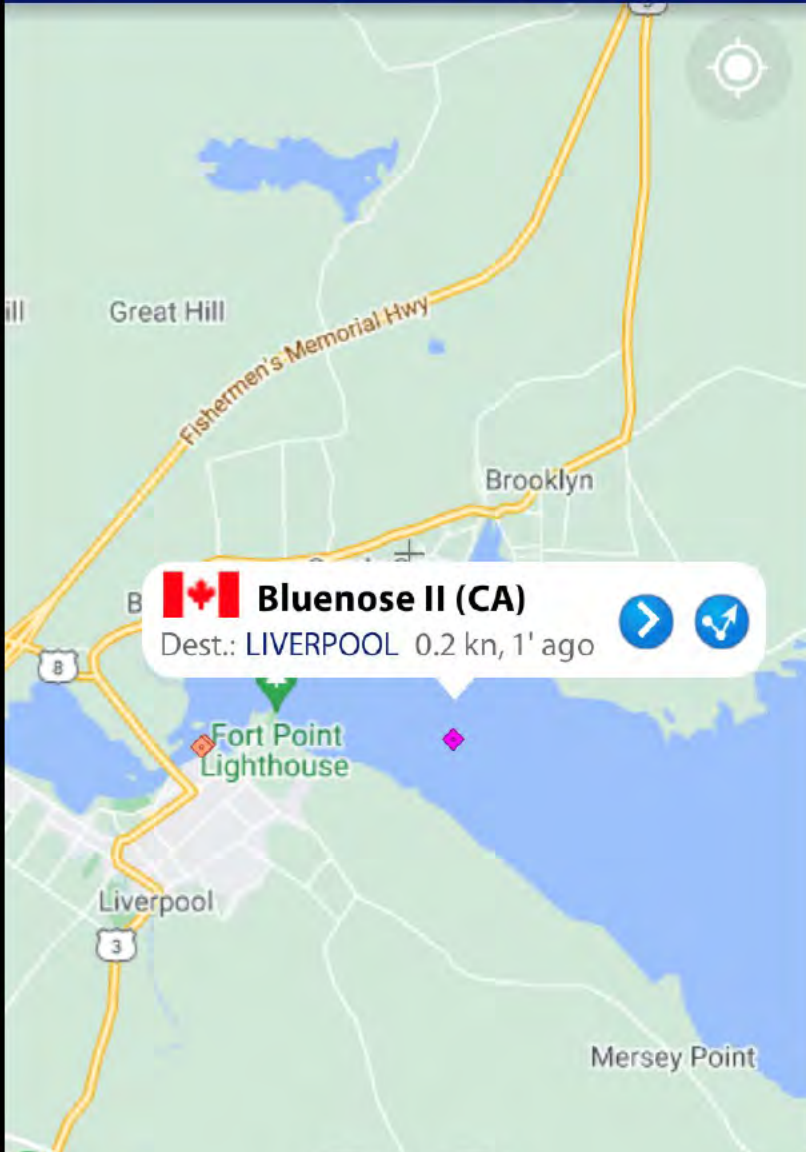
Profile





Notifications



Menu



 **Bluenose II (CA)**  

Dest.: LIVERPOOL 0.2 kn, 1' ago























Brooklyn Marina

Aug 12, 2020 · 🌐










Brooklyn Marina

Aug 20, 2021 · 🌐

 Message Brooklyn Marina

 Like

 Comment

 Share













Brooklyn Marina

Sep 9 · 🌐



Members September Harbour Cruise and Social

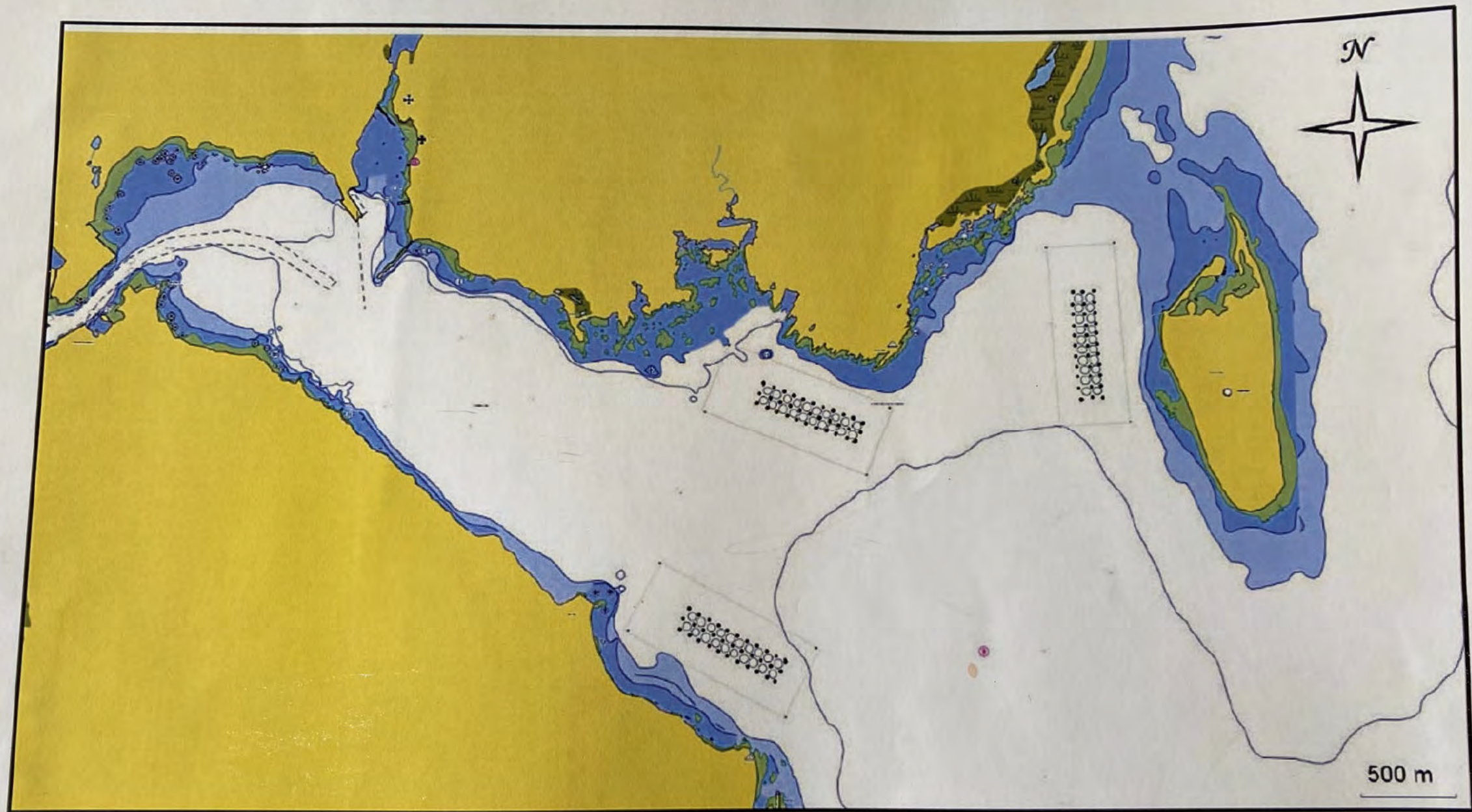
Watch for the Parade of Boats... See more



Opens in Messenger

Send message







Brooklyn Marina

Sep 23, 2020 · 🌐

Great line up of boats for the Parade of Sail and Motor



Brooklyn Marina

Jul 19, 2020 · 🌐

And they're off! Race day at the Brooklyn M... See more

7th Annual **Brooklyn Marina**
MACKEREL TOURNAMENT



Saturday August 12th

at Brooklyn Marina

(Rain date August 19)

Prizes: largest fish - \$200

2nd largest - \$100

3rd largest - \$50

Prizes awarded at 4pm including adult & youth draw prizes.

Registration: \$5 per entrant

Registration at Brooklyn Marina

August 7th – August 11th: 9am to 4pm & August 12th: 7am to 11am

Sponsors





Brooklyn Marina



Jul 6 · 🌐

Welcome to our guests from the [The LaHave River Yacht Club](#)

Good turn out for [Lions Radio Bingo-Sout...](#) See more



👍 You and 20 others

10 comments



Like



Comment



Share



The LaHave River Yacht Club

Scott Young · 28m · 🌐



Preparing for morning motor back to the LRYC in zero wind, calm sea and tic of fog





Brooklyn Marina

Jul 15 · 🌐



Visitors from Brooklyn NY visiting [Brooklyn Marina](#) on the Voyager, a beautiful Schooner



You, [REDACTED] and 39 others

5 comments



























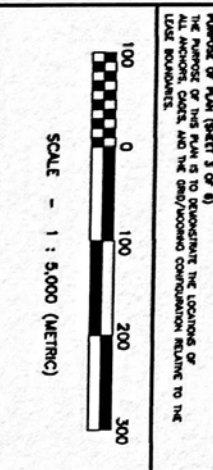
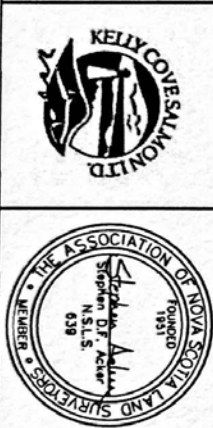
Liverpool Bay





NOTES:

- (1) ALL DIMENSIONS ARE IN METERS UNLESS OTHERWISE STATED.
- (2) THIS PLAN IS A COMBINATION OF HAND DRAWN DATA AND HAS BEEN PROVIDED BY BREAKER INTERNATIONAL LIMITED, A/CORP & PROJECT SURVEYING INC. HAS COMPLETED THIS DATA NOVEMBER 2007.
- (3) ALL BEARING ARE REFERENCED TO CHART DATUM (LOWER LOW WATER, LANGE 1903).
- (4) SOUTH COORDINATE DATA IS BASED ON CANADIAN UNIFORM GEODESIC DATA AND BATHYMETRIC DATA FROM THE CANADIAN HYDROGRAPHIC SURVEY.
- (5) SPOT SOUNDINGS ARE BASED ON SOUNDING DATA PROVIDED BY BREAKER INTERNATIONAL LIMITED.
- (6) COAST SOUNDINGS WERE CORRECTED TO CHART DATUM FROM G.A.S.S. OBSERVATIONS.
- (7) CHARTING SOUNDINGS WERE DETERMINED BY NOAA SOUND PROFILES ONLINE MAPPING AND CHARTING.
- (8) ALL BEARING SHOWN HEREON ARE BASED ON NOAA SOUND PROFILES ONLINE MAPPING.
- (9) ALL BEARING SHOWN HEREON ARE CHART BEARINGS AND ARE BASED ON THE NORTH AMERICAN DATUM OF 1983 (NAD83 CSRS).
- (10) THE UNIVERSAL TRANSVERSE MERCATOR PROJECTION ZONE 20 NORTH (UTM 20N).



Aker & Doucette Surveying Inc.
 Professional Engineers
 Nova Scotia Land Surveyors &
 4003 Highway #208, P.O. Box 64
 Truro, Nova Scotia, Canada
 B9V 3N0
 Phone: (902) 444-8184
 www.akerdoucette.com

608 Olive Road, P.O. Box 307
 Shelburne, Shelburne County
 Nova Scotia, Canada
 B0T 1R0
 Phone: (902) 890-8110
 info@akerdoucette.com

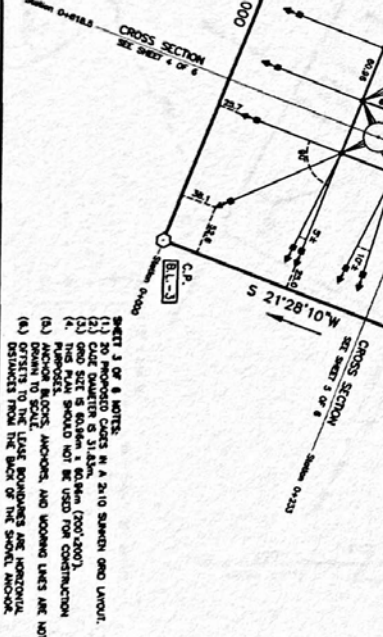
NAD83 Reference Frame, Epoch 2010.0 (Grid)
 Canadian Spatial Reference System (CSRS)
 UTM Zone 20N

Point	Northing	Easting
BL-1	4,877,810.875	366,516.283
BL-2	4,877,443.040	367,451.549
BL-3	4,877,066.141	367,303.316
BL-4	4,877,433.977	366,368.051

NAD83 Reference Frame, Epoch 2010.0 (Grid)
 Canadian Spatial Reference System (CSRS)
 Geodetic Co-ordinates

Proposed Marine Aquaculture Site
 Key Cove Salmon Ltd. - Brooklyn Site
 Area = 40,703 hectares

Liverpool Bay
 (Atlantic Ocean)



KEY PLAN
 Scale - 1 : 50,000

AQUACULTURE SITE DEVELOPMENT PLANS
 AQUACULTURE CAGE CONFIGURATION
 KELLY COVE SALMON LTD. / BROOKLYN SITE
 (ATLANTIC OCEAN), QUEENS COUNTY, NOVA SCOTIA

Client's Statement
 I, Jeff Nickerson of Kelly Cove Salmon Ltd. acknowledge and confirm that Aker & Doucette Surveying Inc. has provided professional services or workmanship with respect to the adequacy of the information of the proposed cage and mooring design of system depicted.
 Dated this 14th day of January, 2019.
 Jeff Nickerson

A&D JOB #300-18-BROOKLYN
SHEET 3 OF 6 DATE: JAN. 14, 2019

KEY PLAN
 Scale - 1 : 50,000

AQUACULTURE SITE DEVELOPMENT PLANS
 AQUACULTURE CAGE CONFIGURATION
 KELLY COVE SALMON LTD. / BROOKLYN SITE
 (ATLANTIC OCEAN), QUEENS COUNTY, NOVA SCOTIA

Client's Statement
 I, Jeff Nickerson of Kelly Cove Salmon Ltd. acknowledge and confirm that Aker & Doucette Surveying Inc. has provided professional services or workmanship with respect to the adequacy of the information of the proposed cage and mooring design of system depicted.
 Dated this 14th day of January, 2019.
 Jeff Nickerson

A&D JOB #300-18-BROOKLYN
SHEET 3 OF 6 DATE: JAN. 14, 2019



Figure 76. Minimum Distance between Proposed Grids

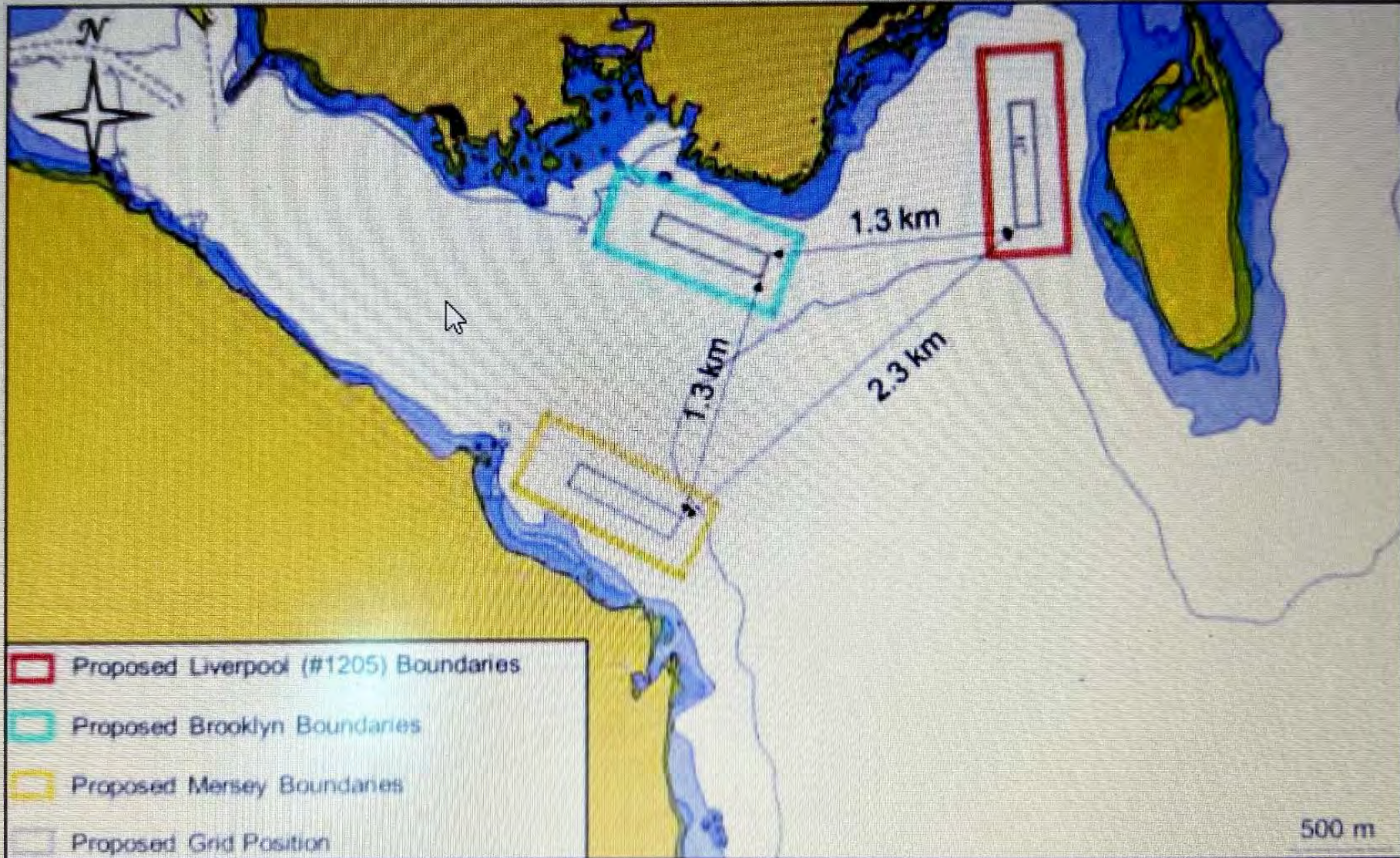
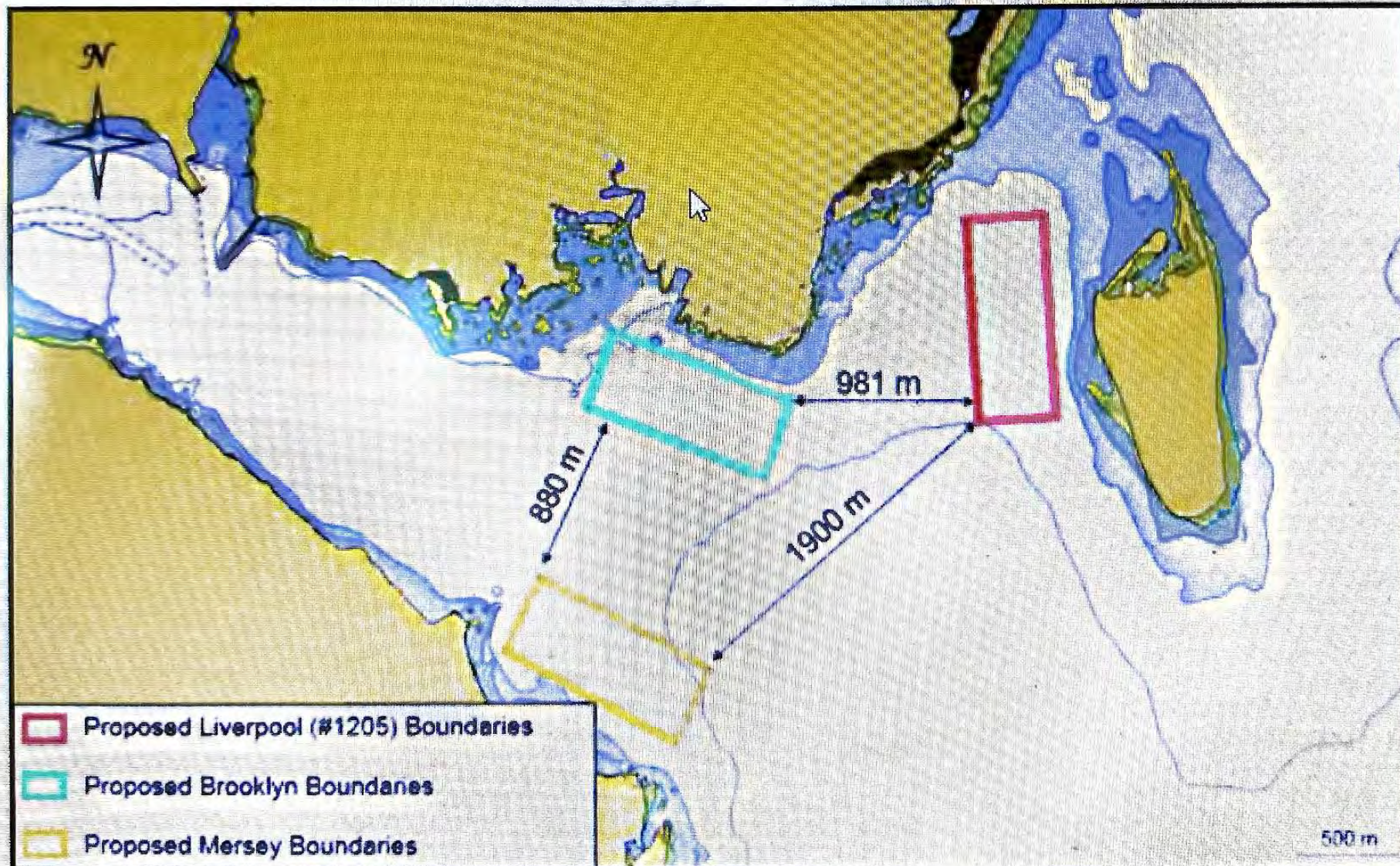




Figure 75. Minimum Distance between Issued and Proposed Marine Aquaculture Sites in Liverpool Bay



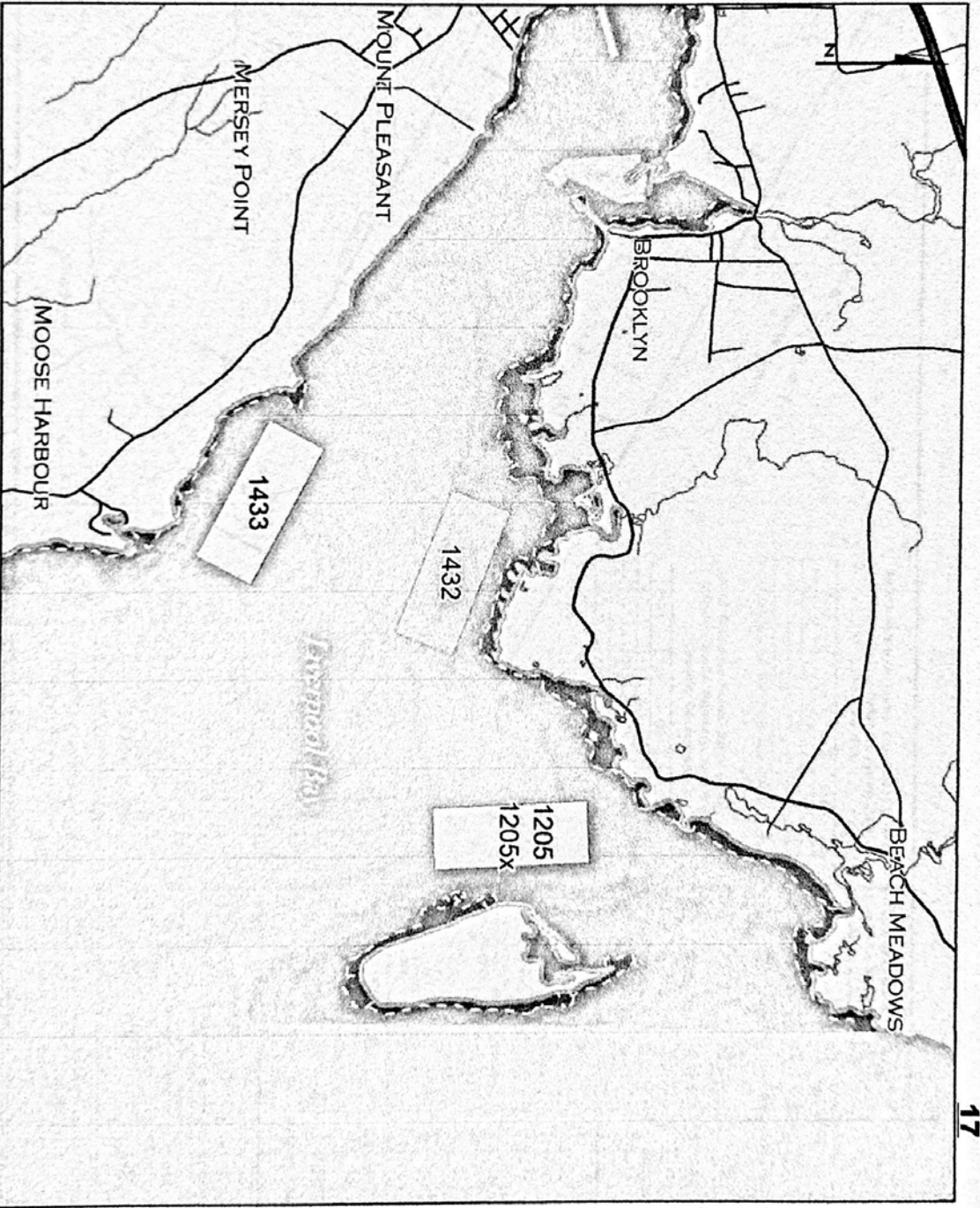


Aquaculture Site

1432

Centre
 Lat 44° 02' 16.98" Long -64° 39' 39.55"
 Corner 1
 Lat 44° 02' 28.73" Long -64° 39' 57.86"
 Corner 2
 Lat 44° 02' 17.42" Long -64° 39' 15.52"
 Corner 3
 Lat 44° 02' 05.12" Long -64° 38' 21.83"
 Corner 4
 Lat 44° 02' 16.42" Long -64° 40' 04.17"

DATUM NAD 83
 The above coordinates
 are from a legal survey



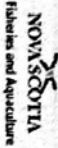
Application Information

Proponents : Kelly Cove Salmon Ltd.
 Site Location : Liverpool Bay
 Dimensions : Approx. 405m x 1005m x 405m x 1005m
 Area : Approx. 40.70 ha

- Proposed Application
- Other Issued Lease
- Other Proposed Lease
- OMHW Mark
- Low Water Mark

Species: Atlantic Salmon

Chart No.
4211



Disclaimer

This map should not be used for navigation or legal purposes. It is intended for general reference use only.

MK-1432-APR-2019